

SSFA comparison

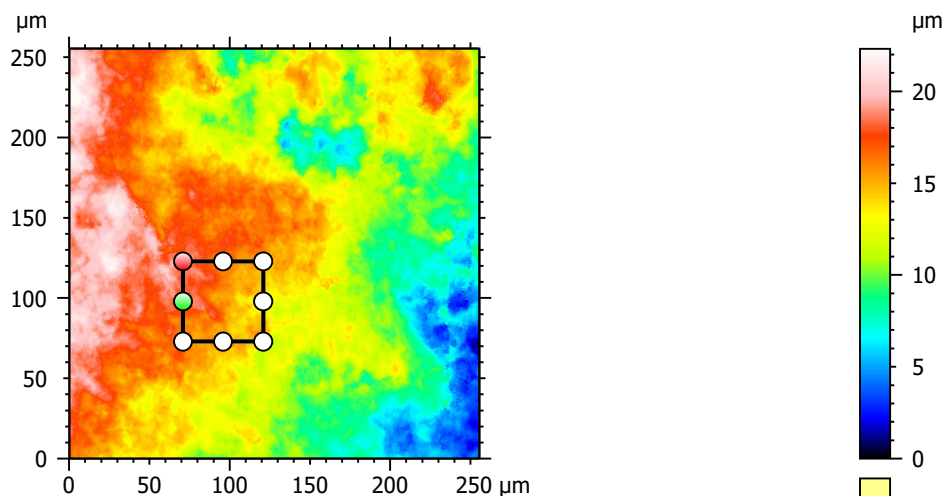
Template to process all lithic surfaces acquired with the Zeiss LSM 800 with the 50x/0.95 objective.

A. Processing

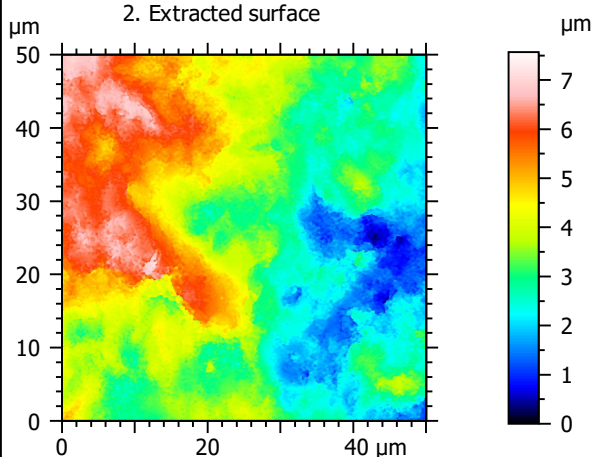
Identity card

Name:	FLT3-8_LSM_50x-0.95_20190321_Area2_Topo		
File path:	D:\Data\3Ddata\SSFA\Lithics\Original surfaces\FLT3-8_LSM_50x-0.95_20190321_Area2_Topo.sur		
Created on:	3/21/2019 2:31:50 PM		
Studiable type:	Surface		
Axis:	X		
Length:	255.5	μm	
Size:	3000	points	
Spacing:	0.08519	μm	
Axis:	Y		
Length:	255.5	μm	
Size:	3000	points	
Spacing:	0.08519	μm	
Axis:	Z		
Layer type:	Topography		
Length:	22.31	μm	
Size:	65532	digits	
Spacing:	0.0003405	μm	
NM-points ratio:	0.1417 % (12753 Pts)		

1. Acquired surface

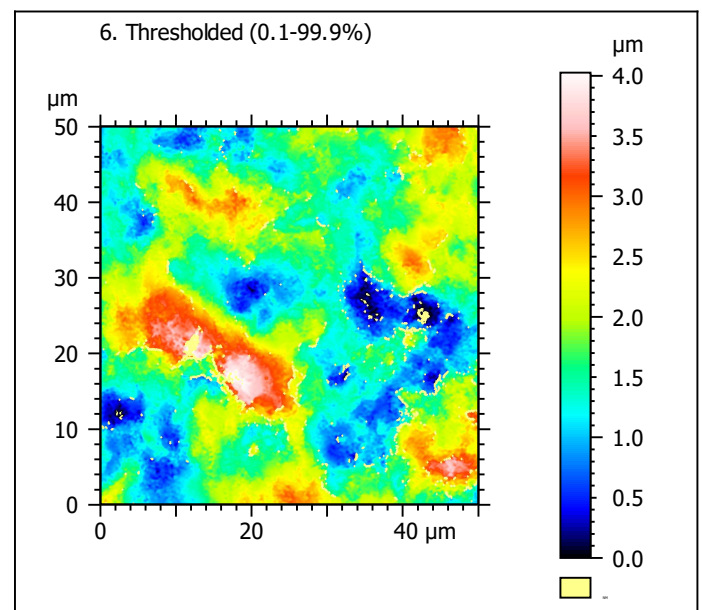
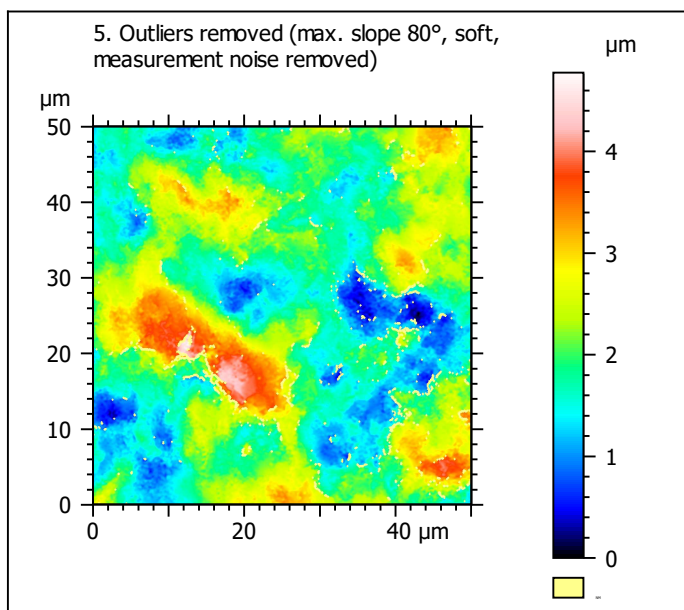
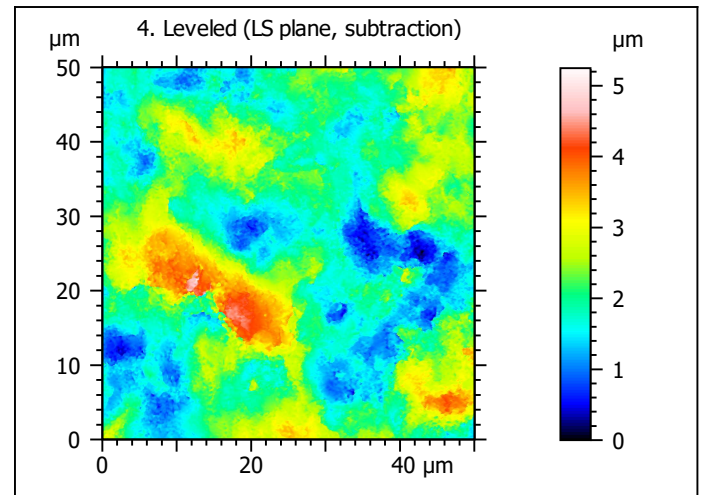
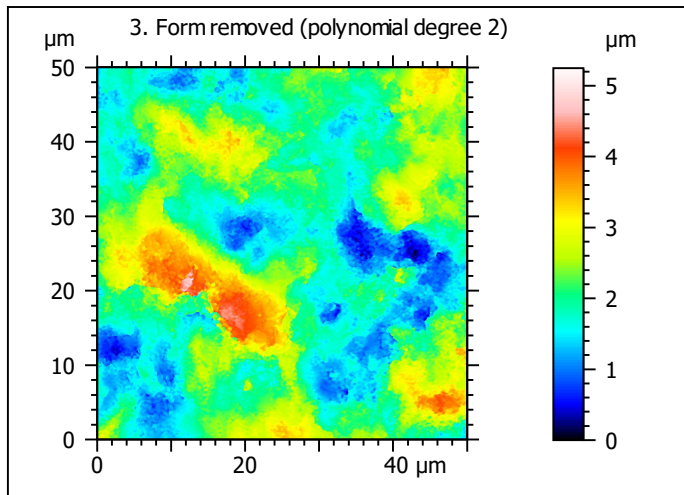


2. Extracted surface



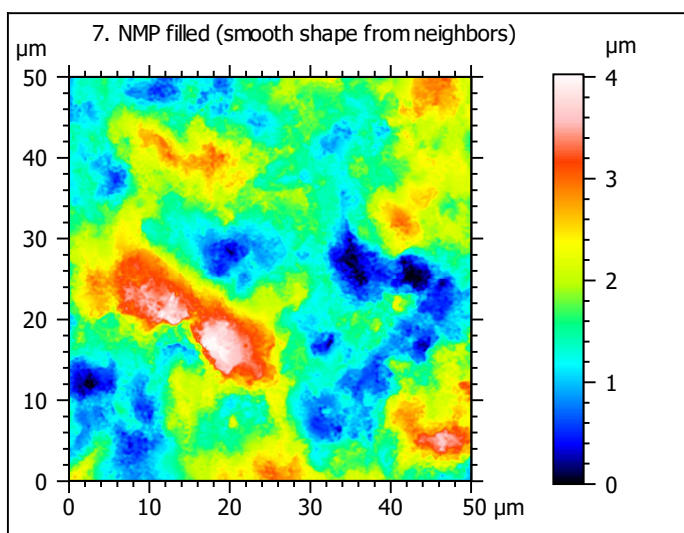
Identity card

Name:	FLT3-8_LSM_50x-0.9...opo > Extracted area		
Axis:	X		
Length:	50.00	μm	
Size:	588	points	
Axis:	Y		
Length:	50.00	μm	
Size:	588	points	
Axis:	Z		
Layer type:	Topography		
Length:	7.569	μm	
Size:	22228	digits	
NM-points ratio:	0.000 % (0 Pts)		

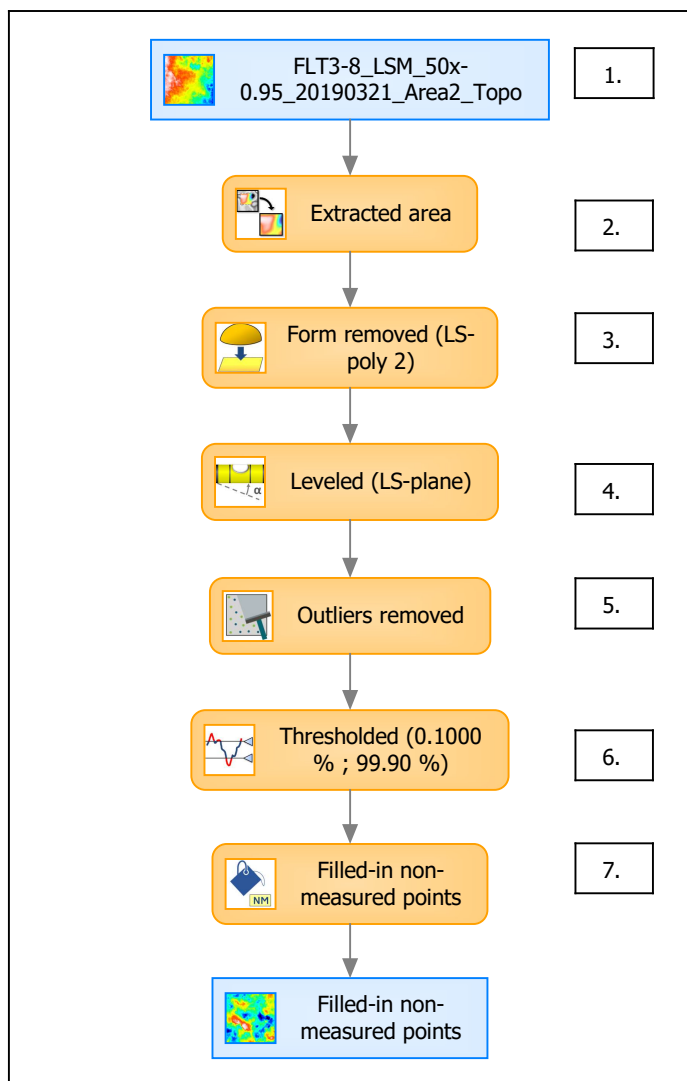


Identity card	
Name:	FLT3-8_LSM_50x-0.9...e) > Outliers removed
Axis:	Z
NM-points ratio:	2.807 % (9706 Pts)

Identity card	
Name:	FLT3-8_LSM_50x-0.9...0.1000 % ; 99.90 %)
Axis:	Z
NM-points ratio:	3.001 % (10375 Pts)



B. Summary



Identity card

Name: FLT3-8_LSM_50x-0.95_20190321_Area2_Topo > Extracted area ...resholded (0.1000 % ; 99.90 %) > Filled-in non-measured points

Studiabale type: Surface

Axis: X

Length: 50.00 μm
Size: 588 points
Spacing: 0.08519 μm

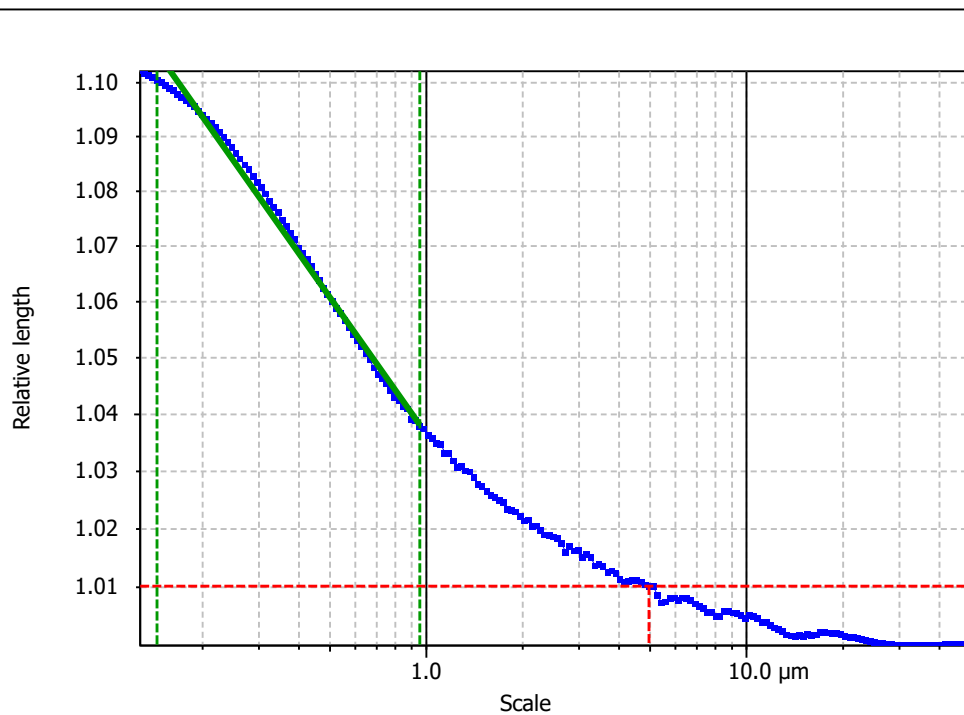
Axis: Y

Length: 50.00 μm
Size: 588 points
Spacing: 0.08519 μm

Axis: Z

Layer type: Topography

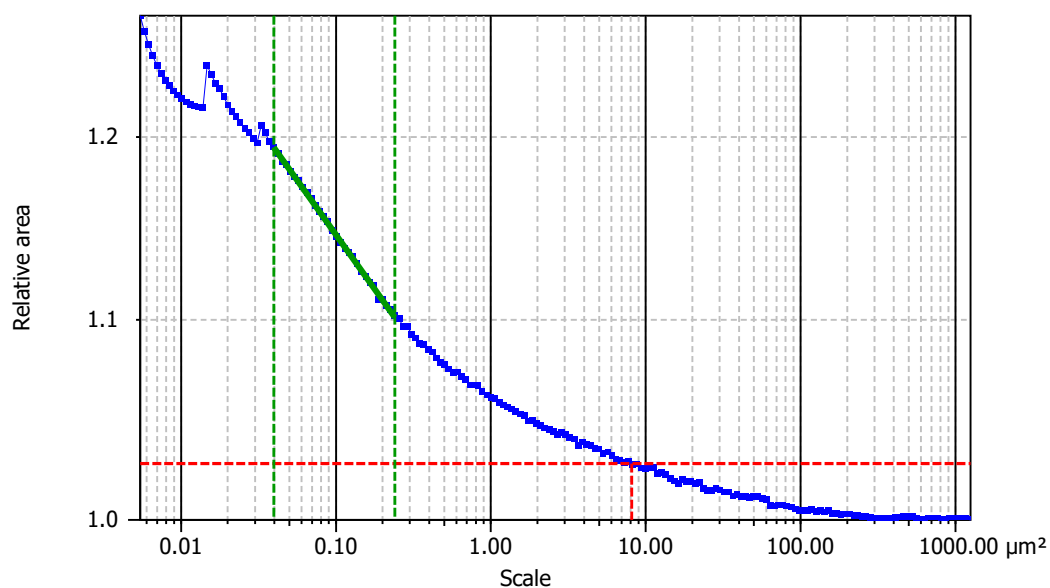
Length: 4.025 μm
Size: 11822 digits
Spacing: 0.0003405 μm

**Information**

Method	Length-scale (rows)
--------	---------------------

Parameters

Parameters	Value	Unit	Comment
epLsar	0.001808		Length-scale anisotropy (Sfrax) (1.8 μm, 5°)
NewEplsar	0.01805		Length-scale anisotropy (1.8 μm, 5°)

**Information**

Method	Area-scale (four corners)
--------	---------------------------

Parameters

Parameters	Value	Unit	Comment
R ²	0.9990		Reg. coefficient R ²
Asfc	45.01		Fractal complexity
Smfc	0.1005	μm ²	Scale of max complexity
HAsfc9	0.1511		Heterogeneity of Asfc (3x3)
HAsfc81	0.2940		Heterogeneity of Asfc (9x9)